

pro clima airtightness system

INTELLO[®]X / INTELLO[®]X PLUS



FOR BETWEEN-RAFTER INSULATION



FOR ROOF REFURBISHMENT FROM THE OUTSIDE

FOR EXTERNAL ROOF INSULATION

Reliable solutions for sealing building envelopes





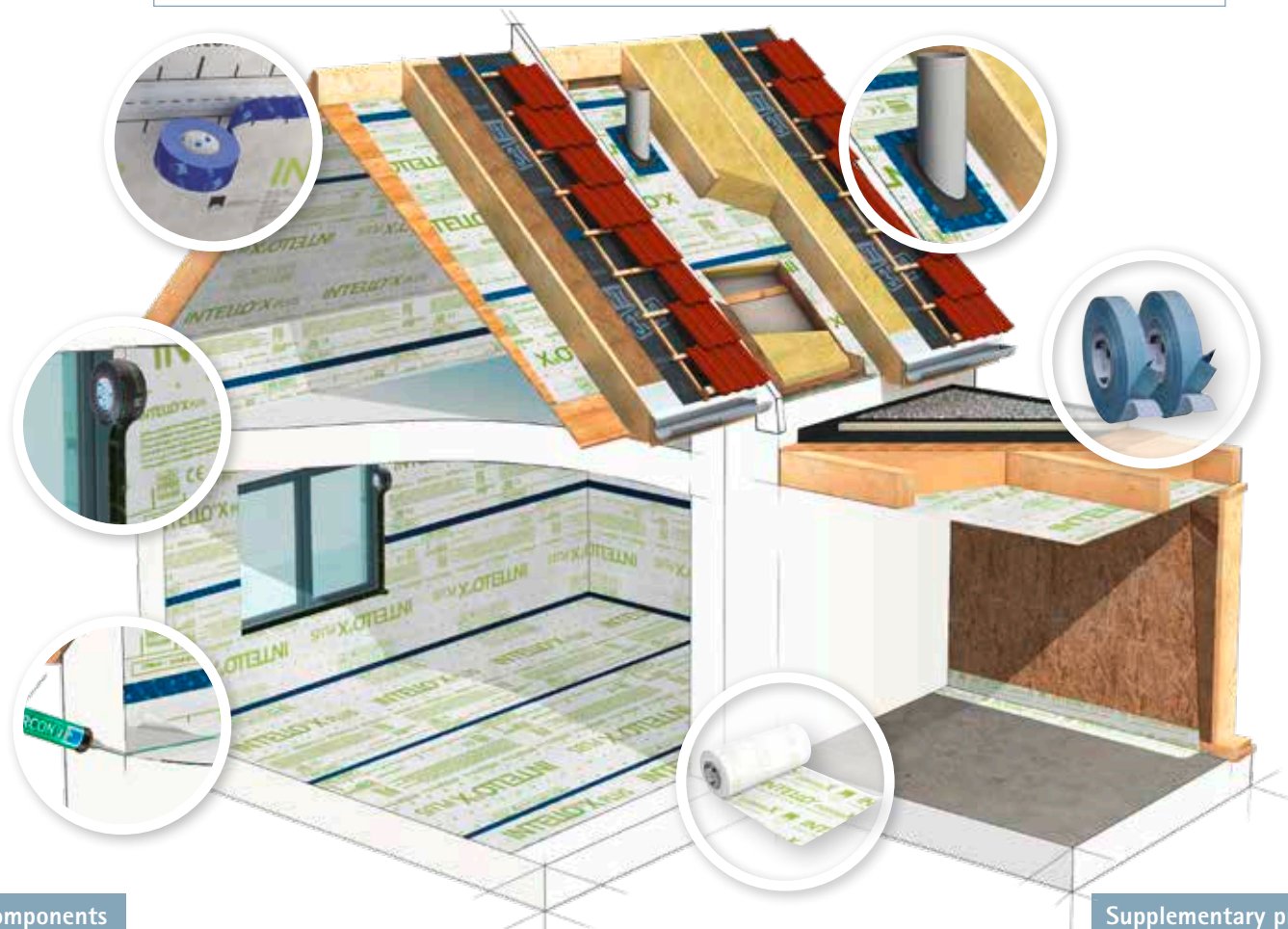
System INTELLO[®]X / INTELLO[®]X PLUS

All-round hydrosafe[®] high-performance vapour retarder / Reinforced all-round hydrosafe[®] high-performance vapour retarder

Versatile use: can be used on roof decking underneath over-rafter insulation, on the inside underneath between-rafter insulation and, in the case of refurbishment from the outside, between two insulation layers made of mineral or rock wool. INTELLO X can also be used in areas where the membrane will be permanently exposed to diffuse UV light, such as areas without inner cladding. INTELLO X membranes can be used on structures that are diffusion-open to the outside or are diffusion-tight, e.g. flat/steep roofs and green roofs, after appropriate design calculations. The reinforced INTELLO X PLUS is ideal for the use of blown-in insulation material.

Advantages

- ✓ Best possible protection against mould and damage to structures thanks to humidity-variable diffusion resistance
- ✓ Can be combined with all fibrous insulation materials, including blown-in insulation
- ✓ One membrane – many applications: with between-rafter insulation, with over-rafter insulation, or for roof refurbishment projects
- ✓ Protects the structure against weathering during the construction phase for a roof pitch above 10°
- ✓ Protected winter building sites thanks to hydrosafe[®] behaviour
- ✓ Excellent values in the hazardous substance test, has been tested according to the ISO 16000 evaluation scheme



System core components

Supplementary products



INTELLO X / INTELLO X connect
Humidity-variable to protect structures with exterior roof insulation and insulation between rafters

INTELLO X PLUS
Reinforced, less expansion. Ideal for use with blown-in insulation

INTELLO connect
Makes the transition of the air seal at the middle purlins and the floor-wall joint easier



TESCON VANA
Provides permanent, reliable adhesion that is airtight and rainproof – both indoors and outdoors



ORCON F
Creates reliable joints with rough or mineral adjacent building components



ORCON MULTIBOND
Creates reliable joints with rough or mineral adjacent building components; joints can be subjected to loading immediately



TESCON PROTECT
Provides permanent, reliable adhesion in corners in an airtight and rainproof manner – both indoors and outdoors



Application for insulation between rafters



Installation steps

The detailed processing steps for the insulation between rafters can be found here:



proclima.info/en/intello-x-plus/insulation-between-rafters

Application for exterior roof insulation



Installation steps

The detailed processing steps for exterior roof insulation can be found here:



proclima.info/en/intello-x/exterior-roof-insulation

Application for roof refurbishment from the outside



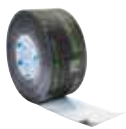
Installation steps

The detailed processing steps for roof refurbishment from the outside can be found here:



proclima.info/en/intello-x/roof-refurbishment

Products for detail solutions



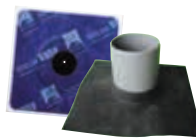
CONTEGA SOLIDO IQ

Ensures particularly reliable window and door joints. Is humidity-variable: airtight and vapour-retarding on the inside, open to diffusion and resistant to driving rain on the outside



TESCON PRIMER RP / TESCON SPRIMER

Primes and strengthens sub-surfaces in a simple, quick and permanently reliable manner



KAFLEX / ROFLEX

Allows for quick, reliable joints to cables and pipes



INSTAABOX

Allows for airtight installation of mounting boxes and switches without a service void



AEROSANA VISCONN / AEROSANA VISCONN FIBRE

Easy-to-use, time-saving system for creating joints



TESCON FIX

Creates a clean surface for bonding and sticking in a simple, cost-effective manner

... und die Dämmung ist perfekt



INTELLO[®] X / connect

All-round hydrosafe[®] high-performance vapour retarder

INTELLO[®] X PLUS

Reinforced all-round hydrosafe[®] high-performance vapour retarder

INTELLO[®] conneX

Sealing strip



NEW

INTELLO X / connect



NEW

INTELLO X PLUS



NEW

INTELLO conneX

Technical data

	INTELLO X / connect	INTELLO X PLUS	INTELLO conneX
Protective and covering fleece	Polypropylene	Polypropylene	Polypropylene
Membrane	Polyethylene copolymer	Polyethylene copolymer	Polyethylene copolymer
Reinforcement	–	Polypropylene non-woven fabric	–
Attribute	Value	Value	Value
Colour	light grey	light grey	light grey
Surface weight	150 g/m ²	170 g/m ²	150 g/m ²
Thickness	0.45 mm	0.60 mm	0.45 mm
Water vapour resistance factor μ	31,100	23,300	31,100
s_d -value/humidity variable	14 m / 0.25 - >25 m	14 m / 0.25 - >25 m	14 m / 0.25 - >25 m
g-value/humidity variable	70 MN-s/g / 1.25 - >125 MN-s/g	70 MN-s/g / 1.25 - >125 MN-s/g	70 MN-s/g / 1.25 - >125 MN-s/g
Hydrosafe value	2 m	2 m	2 m
Fire rating	E	E	E
Outdoor exposure	2 months	2 months	2 months
Water column	> 2 500 mm	> 2 500 mm	> 2 500 mm
Water tightness to liquid water	W1	W1	W1
Tensile strength MD/CD	250 N/5 cm / 170 N/5 cm	490 N/5 cm / 300 N/5 cm	250 N/5 cm / 170 N/5 cm
Elongation MD/CD	60% / 60%	20% / 20%	60% / 60%
Nail tear resistance MD/CD	120 N / 120 N	280 N / 280 N	120 N / 120 N
Durability after artificial ageing	passed	passed	passed
Temperature resistance	permanent -40 °C to 80 °C ; -40 °F to 176 °F	permanent -40 °C to 80 °C ; -40 °F to 176 °F	permanent -40 °C to 80 °C ; -40 °F to 176 °F
Thermal conductivity	0.4 W/(m·K)	0.4 W/(m·K)	0.4 W/(m·K)
CE labelling	yes	yes	yes

Forms of delivery

Product	ID code	GTIN	Length	Width	Area	Weight	Sales units	SU/pallet
INTELLO X	1AR03049	4026639230492	50 m	1.50 m	75 m ²	12 kg	1	20
INTELLO X connect	1AR03027	4026639230270	50 m	1.50 m	75 m ²	14 kg	1	20
INTELLO X PLUS	1AR03017	4026639230171	50 m	1.50 m	75 m ²	14 kg	1	20
INTELLO conneX	1AR03305	4026639233059	50 m	21 cm	10.5 m ²	1.6 kg	4	24
INTELLO conneX	1AR03288	4026639232885	50 m	37.5 cm	18.75 m ²	2.9 kg	1	80
INTELLO conneX	1AR03290	4026639232908	50 m	50 cm	25 m ²	3.8 kg	1	40
INTELLO conneX	1AR03291	4026639232915	50 m	75 cm	37.5 m ²	5.7 kg	1	20

Further information about application and construction is given in the pro clima planning documentation and application recommendations.

(Please also note the recommendations of the currently valid version of the pro clima application matrix.)

pro clima Technical Hotline

☎ +49 (0) 62 02 – 27 82.45, technik@proclima.de

MOLL bauökologische Produkte GmbH
Rheintalstraße 35 – 43
D-68723 Schwetzingen
Germany
Phone: +49 (0) 62 02 – 27 82.0
eMail: info@proclima.de
proclima.com

